



samTrans

Mobility Management: Caltrain

Community Relations Committee
San Mateo
July 6, 2016
Agenda Item 7

Presentation Outline



samTrans

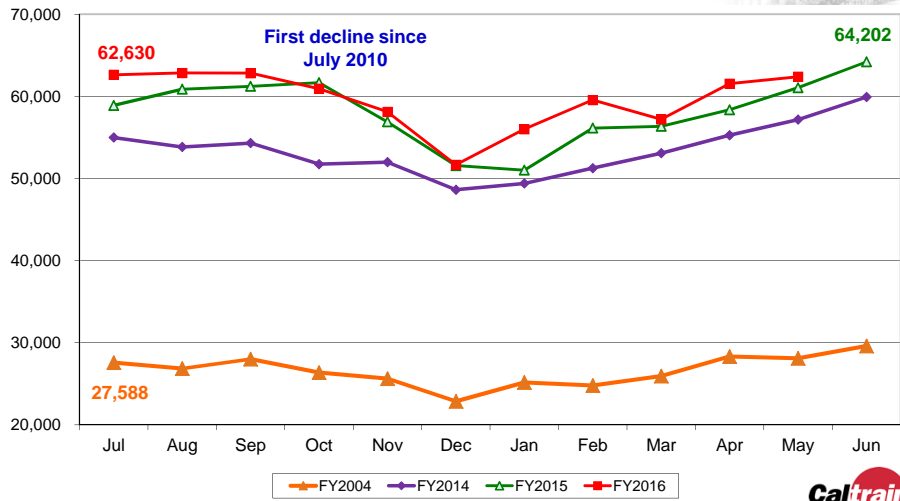
- Operating Statistics
 - Ridership
 - On-time Performance
 - Farebox Revenue
- San Mateo Bridge Project
- Peninsula Corridor Electrification Project
- Summary



Caltrain

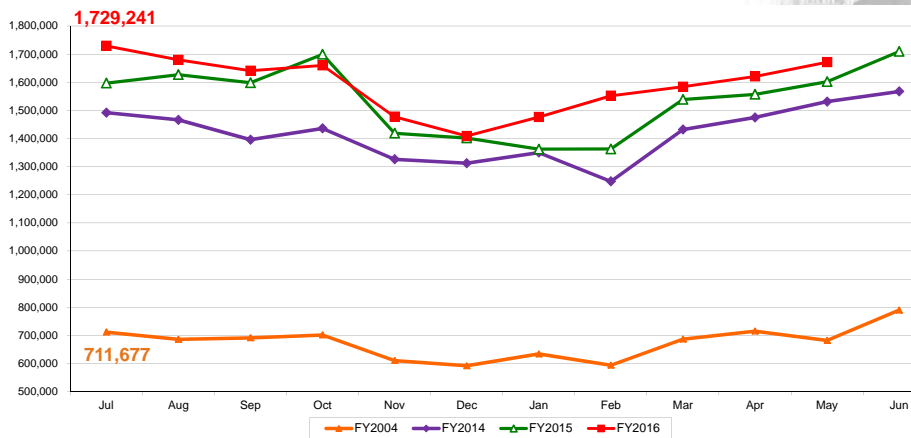
2

Average Weekday Ridership



3

Monthly Ridership

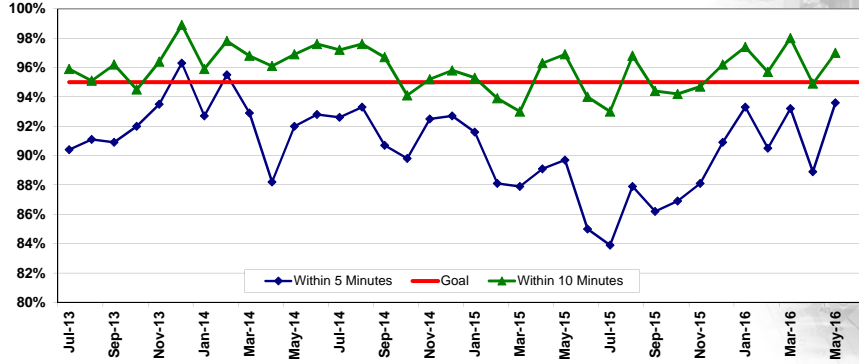


4

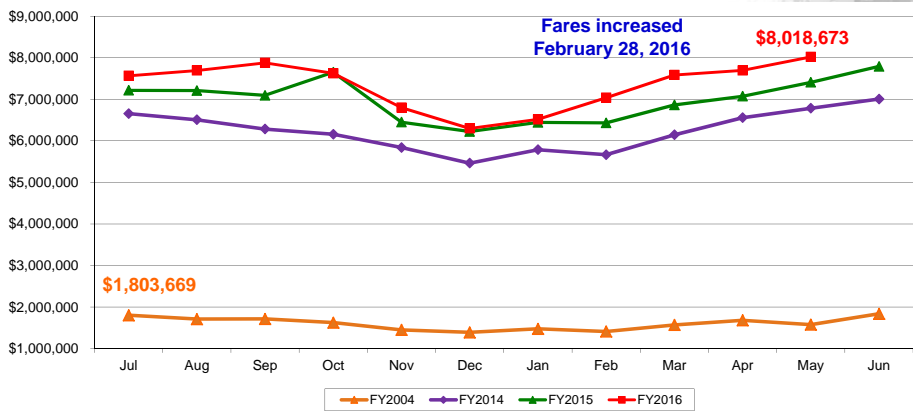
On-time Performance



Monthly Percent of Trains On-time



Fare Revenue



Projects: San Mateo Bridge Replacement



\$40 million project, funded by FTA, State and Local grants



13' 0"

Poplar



15' 0"



7

Projects: San Mateo Bridge Replacement



12' 3"

Santa Inez



15' 0"



8

Projects: San Mateo Bridge Replacement



13' 2"

11' 1"

Monte Diablo



9

Projects: San Mateo Bridge Replacement



8' 6"

8' 6"

Tilton



10

Projects: Peninsula Corridor Electrification Project

samTrans

- Peninsula Corridor Electrification Project
 - SF to San Jose (Tamien Station)
 - Electrification (Overhead Contact System)
 - Electric Trains (EMU), 75% Replacement
 - Service Increase, 79mph, Continue Tenant Service
 - \$1.9B project cost



Caltrain

11

Projects: Peninsula Corridor Electrification Project Continue

samTrans

- PCEP Schedule



Schedule subject to change

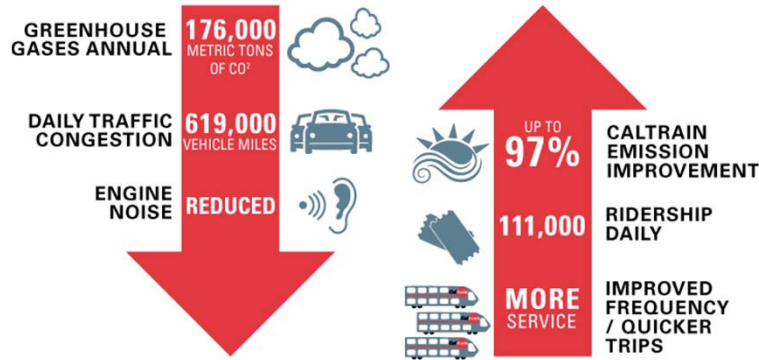
Caltrain

12

Projects: Peninsula Corridor Electrification Project Continue

samTrans

• PCEP Key Benefits (2040)



Caltrain

13

Summary

samTrans

- 10 years of Baby Bullet service is setting all-time records – ridership up nearly 240% since 2004
- Farebox revenue is setting all-time records, revenue is up nearly 350% since 2004
- OTP is below 95% goal, success of crowded trains
- 4 San Mateo Bridges replaced
- Peninsula Corridor Electrification Project is progressing

Caltrain

14