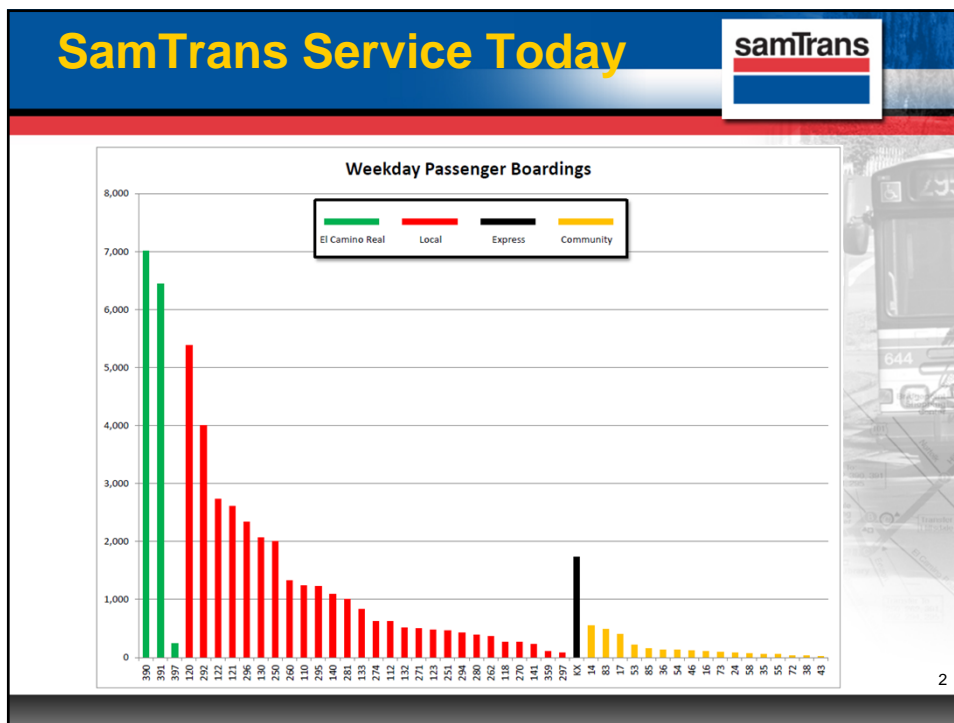



Bus Rapid Transit Phasing Plan

Board of Directors
August 7, 2013


San Mateo



The Challenge for El Camino




- **29,000+ Average Daily Trips**
- **57% intersections at unacceptable levels of service**
- **Growth coming**
 - 30% population
 - 33% jobs
 - 27% households




3

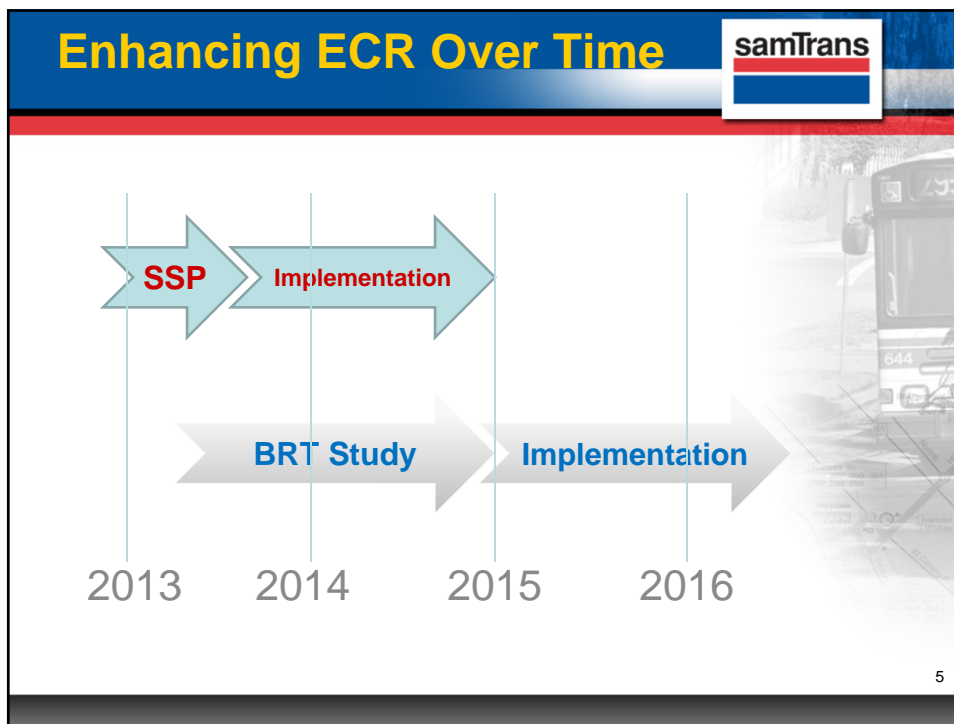
Scope of the Study



- **Assess Future Needs**
- **Evaluate Options**
 - Skip-stop Service
 - Peak-hour Service
 - Queue Jumpers
 - Signal Priority
 - Full BRT
- **Incorporate Grand Boulevard Initiative Issues**
- **When & how do we phase in enhancements?**



4



Stakeholders

A collage of logos for various stakeholders. The samTrans logo is in the top right corner. The logos include:

- City of Menlo Park
- CALIFORNIA DEPARTMENT OF TRANSPORTATION
- City of Daly City
- City of South San Francisco
- City of Burlingame
- City of Millbrae
- City of San Bruno
- City of San Mateo
- City of Redwood City
- City of San Jose
- City of San Francisco
- City of Belmont
- City of Atherton
- City of San Carlos
- Association of Bay Area Governments
- Bay Area Air Quality Management District
- C/CAG
- MT
- County of San Mateo
- City of Milpitas
- City of San Bruno

The number "6" is in the bottom right corner.

Next Steps

samTrans

- Significant stakeholder outreach
- Meet with city councils, VTA, SFMTA and other stakeholders
- Draft report – Spring 2014
- Final report – Summer 2014