

The logo for samTrans, featuring the text "samTrans" in a bold, sans-serif font. The "a" and "o" are lowercase, while "m", "T", "r", "a", and "n" are uppercase. Below the text are two horizontal bars: a red one on top and a blue one on the bottom.

# Mobility Management: Caltrain

Board of Directors  
December 4, 2013

## Presentation Outline

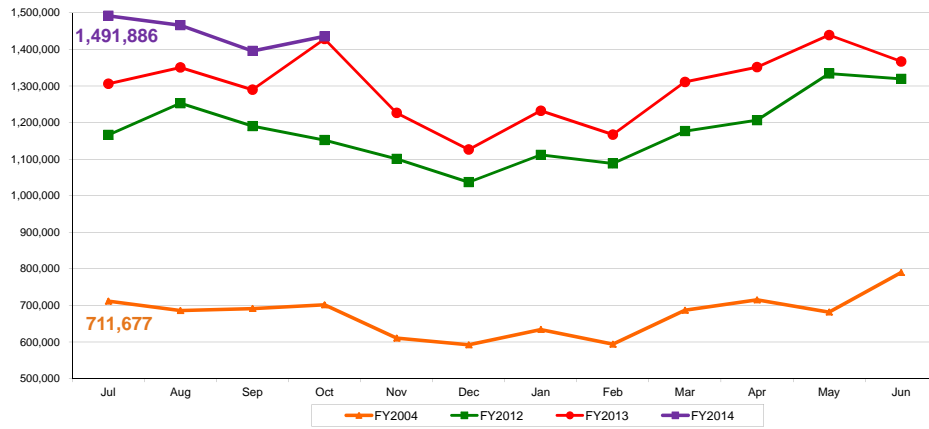
The logo for samTrans, featuring the text "samTrans" in a bold, sans-serif font. The "a" and "o" are lowercase, while "m", "T", "r", "a", and "n" are uppercase. Below the text are two horizontal bars: a red one on top and a blue one on the bottom.

- Ridership
- Fare Revenue
- Performance & Reliability
- Service Highlights
- State of Good Repair
  - Track & Structures
  - Signals/Communication
  - Rolling Stock
  - Stations & Facilities
- Caltrain Modernization
- Projects
  - San Bruno Grade Separation
  - San Mateo Bridge Replacement
- Summary

The Caltrain logo, which consists of the word "Caltrain" in a bold, sans-serif font. The "i" in "Caltrain" has a red dot. To the right of the text is a red circle with a white dot inside, resembling a stylized train wheel or a signal light.

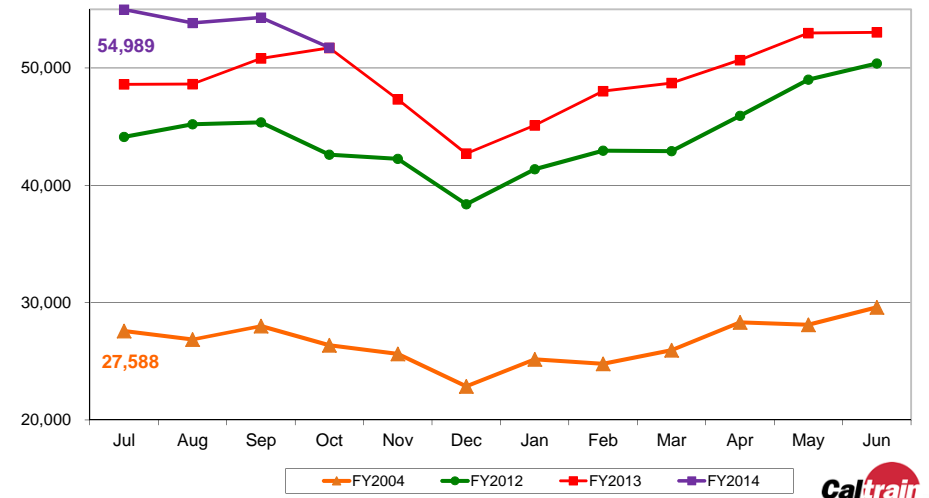
2

# Monthly Ridership



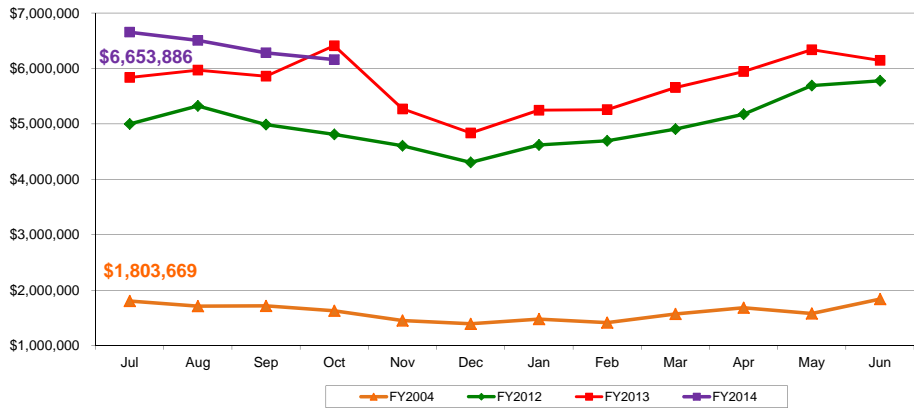
3

# Average Weekday Ridership



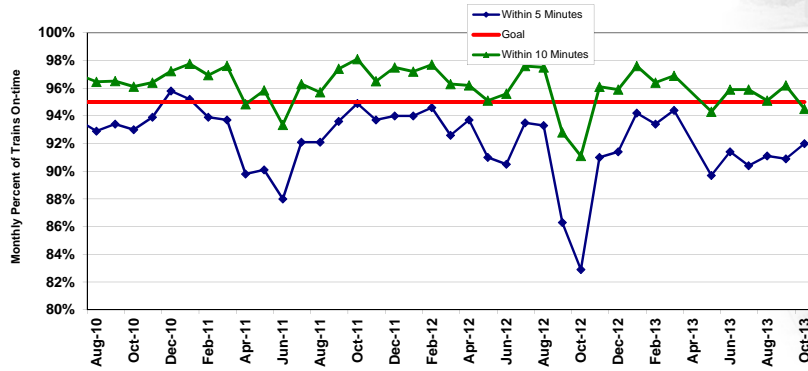
4

# Fare Revenue



5

# On-time Performance



6

## Service Highlights

samTrans

- **Special Event service**
  - Holiday Train Dec. 7 and 8
  - New Year's Eve
  - 150<sup>th</sup> Anniversary Jan. 18 at Santa Clara
- **Sports**
  - Kraft Hunger Bowl Dec. 27 at AT&T Park
  - Sharks at SAP Center
  - Giants Fan Fest Feb. 1, 2014
- **Future Events**
  - Sharks Playoffs
  - Service for Levi's Stadium (49ers)



Caltrain

7

## SOG: Tracks & Structures

samTrans

- **136.7 Miles of Track**
  - Requires periodic inspection, maintenance
  - Quarterly "Geometry Car" runs evaluate track
- **333,848 Ties**
  - 138,732 concrete (2,640/mile)
  - 195,116 wood (3,250/mile)
- **104 railroad bridge structures**
- **34 signal bridges**
- **50 overhead structures owned by others**

Caltrain

8

## SOGR: Signals/Communications

samTrans

- Rail Operations Control System
  - ARINC designed and installed train control system
  - Includes Predictive Arrival/Departure information system
- 31 Control Points
  - Five were recently upgraded; additional 25 to be upgraded over the next year.
- 55 At-grade Crossings
  - 43 at-grade road crossings; 3 were removed this year as part of the San Bruno grade separation project
  - 12 at-grade pedestrian crossings



9

## SOGR: Rolling Stock

samTrans

<u>No.</u>	<u>Type</u>	<u>Year</u>	<u>Avg. Lifetime Miles</u>
20	Locomotives	1985	1,148,727
3	Locomotives	1998	656,728
6	Locomotives	2003	474,727
73	Passenger Cars	1985	1,304,930
20	Passenger Cars	2000	740,930
17	Passenger Cars	2002	593,930
8	Passenger Cars	2008	286,777



10

## SOG: Stations & Facilities

samTrans

- 32 Stations, including 7 on the National Register of Historical Places Listings
- 27 Public Address Systems
- 84 Visual Message Systems
- 113 Ticket Vending Machines
- 6 Clipper Add Value Machines
- 180 Clipper Card Readers
- 120 Shelters
- 4,887 Parking Spaces



11

## SOG: CEMOF

samTrans

- 22-acre site
  - Room for 11 in-service five-car consists on storage tracks
  - 70,000 gallon diesel fuel storage
  - Train wash



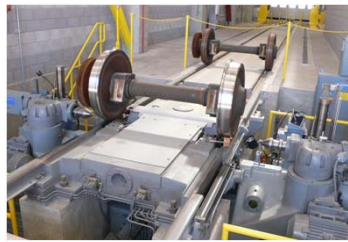
12

## SOGR: CEMOF

samTrans

- **Shop Building**

- room for 3 to 4 locomotives and 5 cars for maintenance
- 25 ton overhead crane
- Wheel truing machine
- Inspection pits



Caltrain

13

## SOGR: Asset Management

samTrans

- **Asset condition assessment/baseline**
- **SOGR infrastructure database**
  - JPB started with Excel/Access database developed by staff
  - FTA grant – one of four pilot demonstrations – to further develop a comprehensive SOGR asset management tool
    - Customizable database and inspection forms
    - Work order tracking system
    - Field data can be uploaded directly to database using web browser
    - GIS integration with Google Earth
  - JPB presenting progress report to senior FTA staff in Washington, D.C. Dec. 11, 2013

Caltrain

14



# Caltrain Modernization

samTrans

## \$1.5 billion regional funding plan

### Projects

- **Advanced Signal System (2015)**
  - Positive Train Control / Communications Based Overlay Signal System
  - Installation work of fiber backbone communications system and wayside equipment is underway
- **Corridor Electrification and Electric Multiple Units (2019)**
  - Focus is completing Environmental Clearance process (end of 2014) and assembling the owner's team to deliver project



15

# Projects: San Bruno Grade Separation

samTrans

### Accomplishments

- Cutover of train operations from at-grade shoofly to grade-separated aerial structure
- Lowering profiles of San Bruno, Angus, San Mateo, & Huntington avenues

### Near-term Tasks

- Architectural finishes and systems installation for San Bruno station, Posey Park, pedestrian underpasses & archway
- Final civil works finishes, such as sidewalks, ramps, final paving and striping, new Transit Center parking lot

### Project Completion

- Early 2014 station opening



San Bruno Avenue Looking South



Posey Park Construction Progress



16

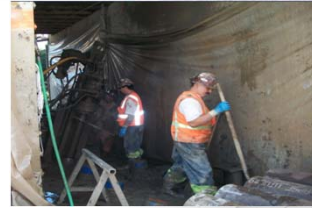


## Projects: San Mateo Bridge Replacement

samTrans

### Accomplishments

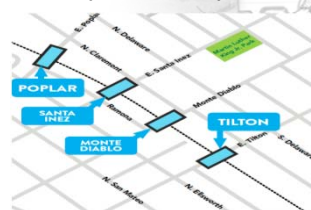
- Completed foundation improvements in 2011
- Awarded contract for Advance Site Preparations
- Received 100% Design for Superstructure Replacement



Foundation Improvements completed in 2011

### Near-term Tasks

- Begin Advance Site Preparations
- Advance Utility Relocations
- Issue bid Superstructure Contract



Four Railroad Bridges to be replaced

### Project Completion

- Late 2016



17

## Summary

samTrans

- Ridership is up for 38 consecutive months
- Farebox revenue continues strong growth
- OTP is below 95% goal, staff focused on improvements
- Caltrain is a large complex system that requires a focus on state-of-good-repair activities to ensure the delivery of safe, reliable service
- Key civil projects are progressing: San Bruno Grade Separation and San Mateo Bridge Replacement
- Caltrain modernization program is moving forward with PTC/CBOSS installation work underway, and the corridor electrification EIR process scheduled for completion in late 2014



18