

The logo for samTrans, featuring the text "samTrans" in a bold, sans-serif font. The "a" and "m" are lowercase, while "T" and "r" are uppercase. Below the text are two horizontal bars: a red one on top and a blue one on the bottom.

Mobility Management – Shuttle Performance

San Mateo

March 14, 2012

Performance

The logo for samTrans, featuring the text "samTrans" in a bold, sans-serif font. The "a" and "m" are lowercase, while "T" and "r" are uppercase. Below the text are two horizontal bars: a red one on top and a blue one on the bottom.

- Shuttles by Mode
- Business Partners
- Public Partners
- Ridership
- Funding
- Shuttle Best Practices
- Shuttle Call for Projects
- Current Highlights
- Summary



Shuttles by Mode

samTrans

Caltrain – 31 routes

- Operates in 3 counties
- Serves 19 stations

BART – 8 routes

- Serves 6 stations

2+ million trips/yr & growing

7.5+ million passenger miles/year



Business Partners

samTrans

Some of the Partners:

- Genentech
- Intel
- Stanford University
- Hewlett Packard
- Oracle
- Google
- AMD
- Walmart
- UPS Freight Systems
- Gilead Sciences



Public Partners

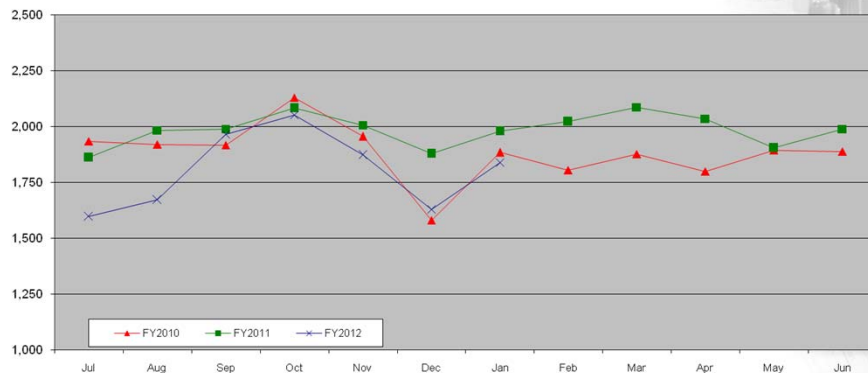


- BAAQMD (TFCA funding)
- C/CAG (Grant Program and TFCA funding)
- Peninsula Traffic Congestion Relief Alliance
- Several cities through the Alliance
- San Mateo County Transportation Authority

SamTrans Shuttle Ridership



Average Weekday Ridership



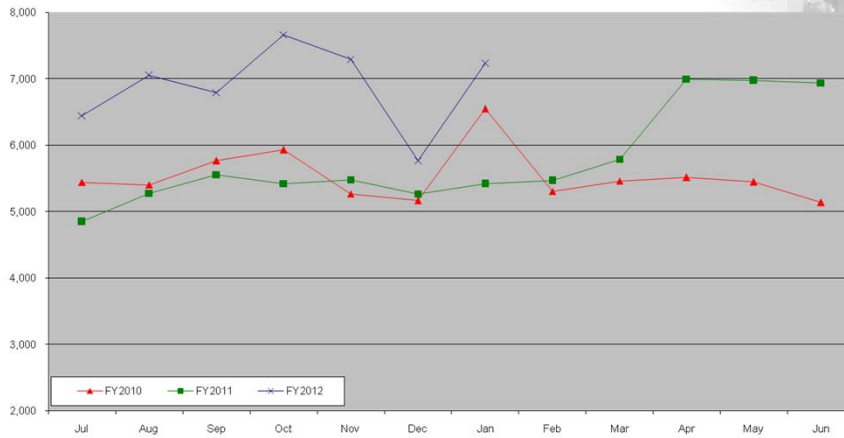
BART Stations Served:

Glen Park, Balboa Park, Daly City, So. San Francisco, San Bruno and Millbrae

Caltrain Shuttle Ridership



Average Weekday Ridership



FY2012 Budget

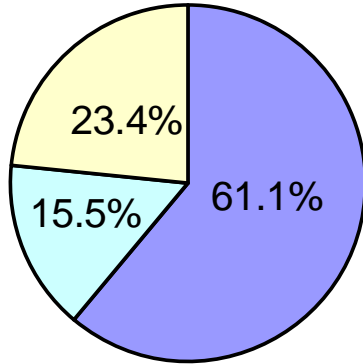


SamTrans Shuttles	\$2,256,390
Caltrain Shuttles	\$2,984,550
Caltrain (SM Co.) & Community Shuttles	<u>\$1,392,606</u>
	\$6,633,546



SamTrans Funding

samTrans



\$1,379,400 Employer

\$ 348,990 SamTrans

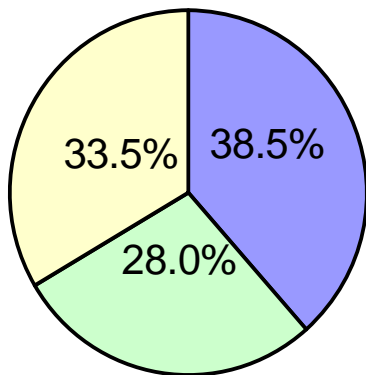
\$ 528,000 AB 434

\$2,256,390 Total

- Employer
- SamTrans
- AB 434

JPB Funding

samTrans



\$1,148,579 Employer

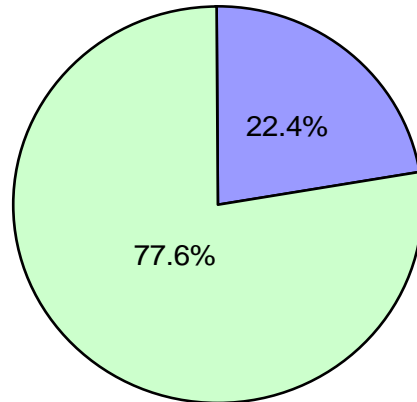
\$ 835,971 JPB

\$1,000,000 AB 434

\$2,984,550 Total

- Employer
- JPB
- AB 434

Caltrain/SMC & Community Funding



\$ 311,271 Employer

\$1,081,335 TA

\$1,392,606 Total

■ Employer
■ TA

Shuttle Business Practices



- Task force
 - City/County Association of Governments
 - Peninsula Traffic Congestion Relief Alliance
 - SamTrans
 - San Mateo County Transportation Authority
- Identify areas of possible shuttle opportunity
 - Planning, Funding, Operations & Administration and Marketing & Public Information
- Next steps

Shuttle Call for Projects

samTrans

- Joint Two-year Shuttle Call
 - City/County Association of Governments
 - San Mateo County Transportation Authority
 - \$7M over 2 years available (FY2013 & FY2014)
 - On street: March 9, 2012
 - Applications due: April 16, 2012
 - To be awarded: Projected June 2012

Shuttle Call for Projects

samTrans

- General Requirements
 - Located in San Mateo County
 - Improve local mobility and/or access to regional transit
 - Meet operating benchmarks
 - Americans with Disabilities compliant
 - Must be a public agency or jurisdiction
 - Minimum funding match: 25%

Current Highlights

samTrans

- Shuttle Contract
 - Option year expires Sept. 30, 2012
- Exploring shuttle contract extension & coordination with Alliance for contract alignment
- Exploring Lifeline Transportation Program supported shuttle partnership with City of Daly City.

Summary

samTrans

- Shuttle program leverages significant external funds.
- Overall ridership trends are up.
- SamTrans, Caltrain & TA are working with C/CAG & Alliance to improve shuttle program coordination.
- Upcoming Shuttle Call for Projects will provide competitive opportunity for funding.